

East Central Catholic Dual Credit Programs



ECACS in partnership with Lakeland College are excited to offer Dual Credit

The Dual-Credit initiative promotes the offering of dual credit courses for high school students. A dual credit course is a college course taken by a high school student that earns both college and high school credit at the same time.

https://soh.ecacs.ca/programs/Dual_Credit

Phone: 780-853-2188

Email: michel.despins@ecacs16.ab.ca

East Central Catholic Lakeland College



How do students enroll in the dual credit programs?

Students will register with the School of Hope as a non-primary student. Access to dual credit courses will be provided through Distance Education program delivery models. The registration of students under the non-primary distance education delivery model will have no financial impact on the primary block funding provided for each student. Reference the Alberta Education Funding manual under the Distance Education for Non-Primary Regulations.



How many courses can the student enroll?

Students can register as a non-primary student at the School of Hope and enroll in up to **two distance education Dual Credit courses per academic year.**

Classes will be delivered both synchronously and asynchronously depending on the course. All classes will be recorded and posted daily. Students can choose to attend the live classes Monday-Thursday or review the recordings at a later date. Course work deadlines will be outlined in the course syllabus for each course.



What costs are involved with students enrolling in the dual credit program?

There are no costs involved in enrolling in the distance education dual credit programs. The School of Hope will be providing the recommended course textbooks; however, all school divisions are encouraged to provide their students with the textbooks if the school division already has the resources on site.

East Central Catholic Lakeland College



American Sign Language I Part A

Introduction to American Sign Language (ASL), culture, and the community of Deaf persons who use this language. Learn how to have basic conversations, as well as use appropriate behaviours with the Deaf culture

Lakeland credit: ASL 101 (3 credits)

PSI 3214 (5 credits)

[Course Outline - https://bitly.co/GEd2](https://bitly.co/GEd2)



Play

Play is a course in the ELCC and CYC programs at Lakeland College. Students will explore the significance of play in the development of children.

Lakeland credit: ED120 (3 credits)

PSI 3075 (5 credits)

[Course Outline - https://bitly.co/GEd3](https://bitly.co/GEd3)



Basic Energy Principles

A prerequisite course to all other courses in the Renewable Energy & Conservation certificate & diploma programs; this course provides students with an understanding of principles of energy systems including electricity, heat, energy movement and water flow.

Lakeland credit: RC200 (3 credits)

PSI 3220 (5 credits)

[Course Outline - https://bitly.co/GEd6](https://bitly.co/GEd6)

East Central Catholic Lakeland College



Hair Styling

This course provides the student with an overview of the requirements of a safe working environment in which to practice hairstyling.

Lakeland credit: ST130 (1credit)

HSA 3900, 3406, 3411 (3 credits)

Course Outline - <https://bitly.co/GEg6>



Introduction To Esthetics

This course will provide students with an overview of safe practices in the workplace regarding bacteriology and sanitation. Students will learn to formulate a professional image and practice skills needed to work with the public.

Lakeland credit: HS160 (3 credits)

PSI 3072 (3 credits)

Course Outline - <https://bitly.co/GEd8>



Heavy Oil & Gas

This non-credit course will explain what heavy oil is and ways heavy oil is produced as well as explore the steps involved in getting heavy oil and natural gas out of the ground and into the marketplace. Non-credit course at Lakeland College – students will receive a completion certificate.

PRS 1020, PRS2020 & PRS2030 (3 credits)

Call or email for more information.

East Central Catholic Lakeland College



Health, Nutrition & Safety

This is a required course in Early Learning & Child Care certificate and diploma programs at Lakeland College. It focuses on the health services foundation with exploration of a child's nutritional and wellness choices.

Lakeland credit: HE158 (3 credits)

PSI 3074 (5 credits)

[Course Outline - https://bitly.co/GEEdA](https://bitly.co/GEEdA)



GIS & Remote Sensing - Drone Preparation

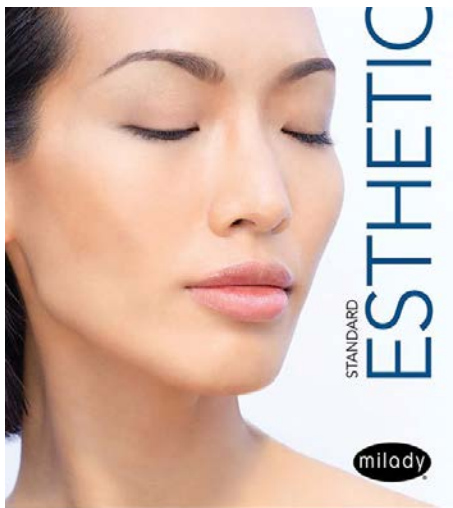
GIS and Remote Sensing (Drone prep) involves learning about how to manipulate GIS data and various software programs, students will be prepared to write the basic drone operator certificate exam. Access to a Drone is helpful but not mandatory for this theoretical course. Students may then follow this course up with a drone flight workshop in their area and take the advanced operator exam for full certification.

Lakeland credit: SC 220 (3 credits)

PSI 3305 (5 credits)

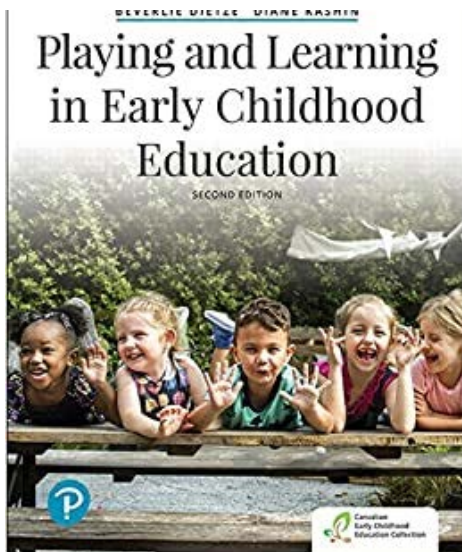
[Course Outline - https://bitly.co/GEgQ](https://bitly.co/GEgQ)

East Central Catholic Lakeland College



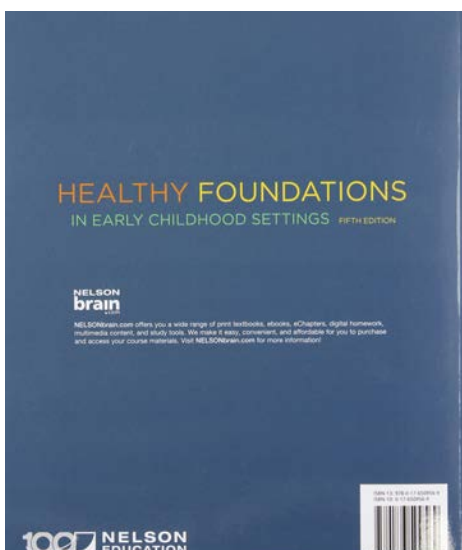
Esthetics Textbook Resource

Esthetics: Milady Standard Esthetics: Fundamentals 11th edition,
ISBN-13:978-1-111-30689-2



Play & Learning in Early Childhood Education Textbook Resource

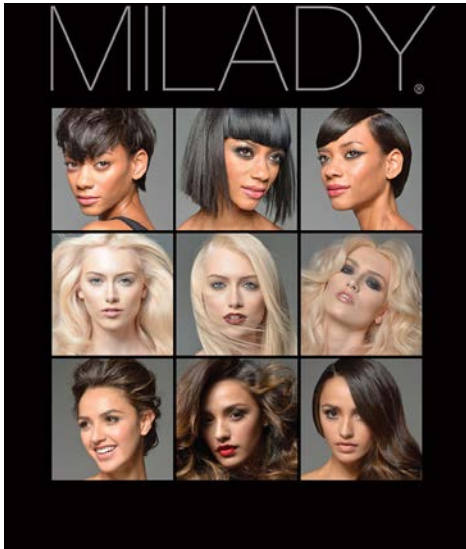
Play: Playing and Learning in Early Childhood Education second edition
ISBN-978-0-13-463927-7



Health, Nutrition & Safety: Healthy Foundations in Early Childhood Textbook Resource

Health Nutrition and Safety: Healthy Foundations in Early Childhood
Settings 5th edition, ISBN-13-978-0-17-650956-9

East Central Catholic Lakeland College



Hairstyling Textbook Resource

Hairstyling: MILADY STD CSOMO TEXT, 13th ED.

Technical Requirements

The courses are offered through D2L, a Learning Management System (LMS). Each student's device will require:

- Access to broadband Internet
- Webcam or video conferencing camera (Zoom - Google Meet)
- Web browser (Chrome, Firefox, Microsoft Edge)
- Word processing software (Office, Google Apps)

school of

HOPE

Further Information:

Vice Principal - Michel Despins

Dean Of Health, Wellness & Human
Services - Janice Aughey

School Of Hope - East Central Alberta
Catholic Schools

Lakeland College

Phone: 780-853-2188

Phone: 780-853-8460

Email: michel.despins@ecacs16.ab.ca

Email: dualcredit@lakelandcollege.ca

https://soh.ecacs.ca/programs/Dual_Credit